

Diane Michelin Argentina Week with Andes Drifters

Feb 26th to March 5th

Arrival Saturday 26th Arrival Day. Diane Michelin Introduction & Welcome Dinner

We will pick the group up at the Airport and drive them to Spring Creek. The lodge is strategically located right on the banks of the Chimehuin River with a magnificent view of Lanin Volcano. A natural side branch of the main river regulated by a group of dams and ponds creates the “spring creek”. Six independent chalet located by the ponds will give to each couple the privacy of having their own unit. The Club House is where you will enjoy your meals with a great ambiance. Franky Politzer is the Host of Spring Creek and will take care of every single need you might have at any moment.

Once everybody is checked in Diane will give an introduction to her art and the Watercolor workshop that will take place during the trip.

Afterward we will go on a short outing with cameras to collect photo material for reference in the beautiful surroundings of the Chimehuin River with great view of Lanin Volcano in the background.

At the bottom of the program you can see the Content Detail of the Workshop.



While we relax on the fantastic view of the Lanin volcano we will enjoy an introduction to Argentinean Wines, a selection of labels from the different wineries areas will delight you while learning about the wines of the diverse areas in the country. Afterwards a traditional dinner will complete your intro to our country.

Sunday 27th Watercolor Workshop & Horseback Day at Lolog Lake

After breakfast we will start with Diane's Watercolor Workshop for a session of 3 hours duration.

Later we will leave Lodge in direction to Lolog Lake area to visit a unique Ranch over viewing the lake. We will enjoy of a Ranch day where we will take a great ride to panoramic views enjoying of the Patagonian Lake district forest. For Lunch we will enjoy a traditional Asado at the Ranch.



Tonight while enjoy our dinner we will have a Tango show presented by Marcos and Analia a couple of local dancers that will introduce us to the world of Tango music.



Monday 28th Watercolor Workshop & Malleo River Fishing.

After breakfast we will continue with Diane's Watercolor Workshop for a session of 3 hours duration.

After workshop we will drive just 20 minutes from the Lodge to reach the water of Malleo River, here we will spend our fishing day in the lower section of the stream what runs through an Indian Reservation.

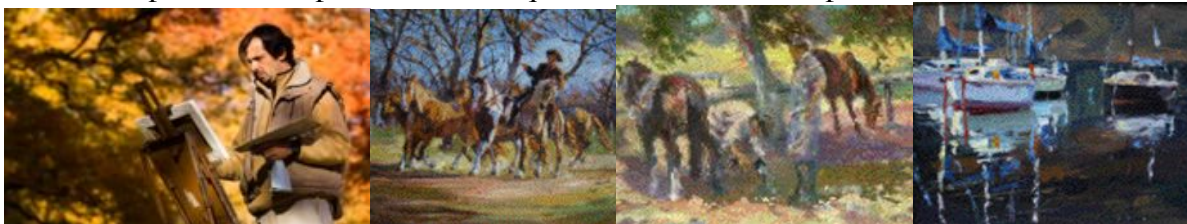
Malleo River is famous as one of the best streams of Northern Patagonia for dry flies. This river is a medium size stream populated with rainbows and browns in average 16 to 18 inches hiding some trophy brown trout in every corner. This stretch of the river gives us the gentlest wading of the stream while we look for large trout feeding between the branches of willow trees.



Tuesday 1st Watercolor Workshop & Visit Local Artists in San Martin de los Andes.

After breakfast we will continue with Diane's Watercolor Workshop for a session of 3 hours duration.

We will visit the atelier of Dario Mastrosimone (www.dariomastrosimone.com.ar). He is a talent local palette knife painter we a unique mix of color and expression.



Afterwards we will visit and local wood sculptor who creates the most realistic pieces of regional animals such as eagles and horses, Dionisio Szigyarto. This singular artist will share with us how he choose each piece of wood to discover the animal that is hide in to it.



While we are visiting San Martin de los Andes we will be delight we an exquisite lunch at El Regional Restaurant. A combination of traditional dishes and regional food will be part of the great menu.

After lunch we will visit the icon artist on the region. We have the fortune of having one of the top palette knife painters of the world as a neighbor in San Martin de los Andes; Georg Miciu www.georg.com.ar We will meet him and will have the chance a very rich visit to his art and the way and learn how he has develop as such a talented artist.



Wednesday 2nd Diane's Workshop & Alumine River Float Trip

After breakfast we will continue with Diane's Watercolor Workshop for a session of 3 hours duration.

Today after Workshop at the Lodge we will start a float trip on the Alumine River located just 40 minutes away from the Lodge, where we will be amaze by beautiful rocky formations and a vast wide valley as our scenery.

The Alumine River is the Headwater of the Collon Cura River and runs through a beautiful rocky canyon. This stream is populated with browns and rainbows that run in sizes between 17 and 19 inches. Long riffles are ideal to fish hopper and dropper on the edges of it and any moment we will be having chances of catching brown that can reach sizes over 23 inches.

We will float a section of 7 miles of the river of what we consider the lower section of the Alumine.



Thursday 3rd Diane Michelin Watercolor Workshop & Hike on Mapuche Indian Reservation and Lanin National Park- Musicians Dinner

After breakfast we will continue with Diane's Watercolor Workshop for a session of 3 hours duration.

We will hike in the surrounding of San Martin de los Andes, at the Mapuche Indian Reservation where we will have the chance to enjoy wonderful views of Lacar Lake and the charming forest of Lanin National Park.



At lunch time we will visit a Mapuche Indian Farm where we will have the chance to learn about their culture. Our hosts at the farm (Ricardo and Guadalupe) are two talented artisans. He makes unique leathers pieces and she will show us her mapuche loom and the blankets and belts made them on it.

Tonight while enjoying the dinner prepare by our chef and we'll receive local musicians at a private concert they will play for us. Milton and Luis will play their charming Celtic music and a variety local folk music.



Friday 4th Watercolor Workshop & Chimehuin River float trip

After breakfast we will continue with Diane's Watercolor Workshop for a session of 3 hours duration.

Just 10 minute from the Lodge and downstream the town of Junín de los Andes we will start a float trip on the water of the Chimehuin River.

This stream is known as the most productive water of Northern Patagonia. A large population of rainbows and browns in an average of 17 to 18 inches lives in these waters. We will enjoy hopper actions on the riffles and banks. And if we are lucky will enjoy the best mayflies' hatches of North Patagonia during evening time.



After fishing we will come back to the Lodge for the trip Momento where we will share conclusions about our experience during the Workshop and enjoy a special “god bye” dinner at the Lodge.

Saturday 5th Departure

After breakfast we will drive you to the Airport.

In addition to the document above that outlines the week including workshops a list of additional available activities that the client may choose at the time of booking is as follows:

List of alternative Activities:

- **Fishing everyday according to a menu of different rivers for wading and floating (Chimehuin, Collon Cura, Alumine, Malleo and Caleufu).**
 - **Several options for short and longer hikes for all levels of difficulty.**
 - **Bike trips on the different trails in the National Park.**
 - **Sight seeing trip to the base of Lanin Volcano can be combined with a hike or a boat trip.**
 - **Bird watching, one day outing to the two birding areas (steppe of Collon Cura River Valley and to the Lake District Forest of Lanin National Park).**
 - **Visit to world class artisans studio and shopping in San Martin de los Andes.**
 - **Additional horse ride trips.**
 - **Spa Day at Chapleco LOI SPA Resort.**
-

Contents of the Week Workshop:

- 1- The use of materials and basic techniques with brushes, paper surfaces, stretching, plus creating a palette with limited colors.**
- 2- Sketching, transferring an image to watercolor paper, composition and design rules, learning how to use masking fluid. Painting simple objects at the beginning.**

- 3- Learning how to do a wash and graduated wash.**

- 4- Painting their own masterpiece by learning how to capture light and its direction, how to tie all the elements together. The essential part of the painting process is being able to create what we call “a circular movement”.**

- 5- Exercises will be spread throughout the daily sessions: pouring, wet, dry paper, glazing, handling different brushes and stokes, along with special effects created by lifting, scratching, scraping, the use of sandpaper, candle and salt.**

This basic outline will be modified respecting the artistic experience of the clients.

The guests will be able to produce different sketches before finishing a complete watercolor on their own.